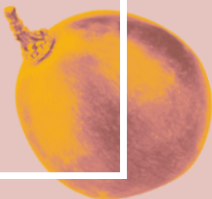


IN CAN TO

PIEMONTE

D.O.C. - 2023
ROSATO

12,5% Vol



75 cl

AREA OF PRODUCTION

Grapes come exclusively from vineyards located in the municipality of fontanile

GRAPES

100% Pinot Noir

HARVEST

Manual, in crates

VINIFICATION TECHNIQUE

Direct pressing and low-temperature fermentation

AGING

In stainless steel in contact with the lees

COLOR

Soft pink

PERFUME

Aroma of rose, raspberry currant and strawberry

