

# JEAN LEON

## VINYA LE HAVRE 2020

*Qualified Estate Wine*



In 1963, Jean Leon realized his dream of an eponymous winery. He became one of the pioneers to introduce French varieties in Penedès region. Vinya Le Havre is a tribute to the generous silence of an unknown sailor who would change Jean Leon's life forever.

**DO:** Penedès. Certified as a *Qualified Estate Wine*.

**Varieties:** 80% Cabernet Sauvignon - 20% Cabernet Franc

**Winemaker's Note:** Intense on the nose and characterized by notes of red fruits and aromatic herbs complemented by toasted notes imparted by oak ageing. On the palate it stands out for its fine structure, long and persistent on the finish.

## WINEMAKING

**Harvest:** Cabernet Sauvignon: 30 September 2020; Cabernet Franc: 7 October 2020

### Vinification:

**Length of maceration:** 12 days.

**Type of fermentation:** Alcoholic fermentation in stainless steel tanks and malolactic in French oak barriques.

**Length of fermentation:** Cabernet Sauvignon 12 days; Cabernet Franc 13 days.

**Fermentation temp.:** 23°C

**Ageing:** 12 months in 225-litre French and American oak barriques and a minimum of one year bottle ageing.

**Bottling date:** 1st July 2022

**Production:** 17.789 bottles of 0,75cl.

**Batch:** L22182M

## TECNICAL INFORMATION

**Organic:** Yes

**Vegan:** Yes

**ABV:** 14,5%

**pH:** 3,53

**Total acidity:** 6,29 g/l

**Residual sugar:** 0,7 g/l (G+F)

**Total SO2:** 81 ppm

**Allergens:** Contains sulphites

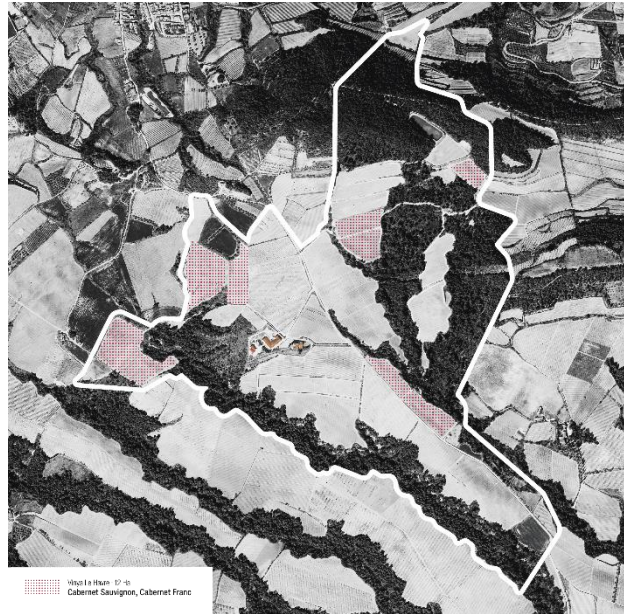
**Storage temp.:** 12-15 °C

**Serving temp.:** 16-18 °C

## AWARDS & ACCOLADES

· 93 points "Catalunya 2024, Special Report" by Tim Atkin

# JEAN LEON



## VINEYARD INFORMATION

**Vineyard:** Le Havre.

At the French port of Le Havre, Jean Leon stowed away on a ship bound for the US. He was soon discovered by a sailor who decided to keep his presence a secret. Vinya Le Havre is a tribute to an unspoken pact with a stranger who changed Jean Leon's life forever.

**Location:** Alt Penedès, Catalunya.

**Planting year:** 1968

**Surface area:** 12 ha

**Elevation:** 245 - 285 m

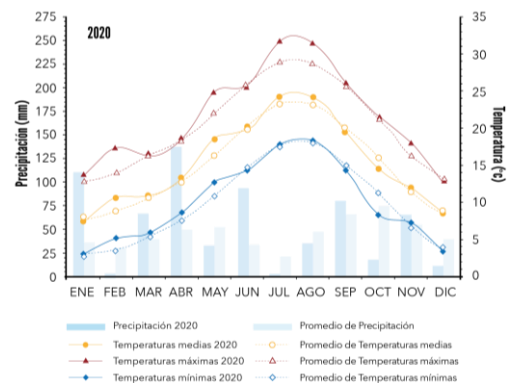
**Slope:** 5-10%

**Row orientation:** South and northeast

**Soil:** Calcareous clay. Shallow, well-drained, and medium-textured soils, light yellowish in colour, with very few stones. Low in organic matter, but high in calcium carbonate and limestone. Moderate water holding capacity.

**Agriculture:** 100% organic since 2008.

## CLIMATE CONDITIONS



**Total precipitation:** 639,6 mm

**Average temp.:** 15,3 °C

2020 has been a rainy year with temperatures higher than usual, with some summer days exceeding 30 degrees.